



**BUCKET LIST TRAVEL**  
making your travel dreams a reality



# New Year Sale - Vancouver

3 nights from  
**\$2,316**

## Flying Air New Zealand

pp share twin  
Prices are ex AKL

### INCLUSIONS:

- Return Economy Class airfares to Vancouver flying Air New Zealand ex Auckland OR Wellington/Christchurch (via Auckland)
- Accommodation and bonus offers as outlined
- All prepayable taxes and surcharges.

### ADD ON:

- Please add \$150 return for travel from all other Air New Zealand domestic points, via Auckland.

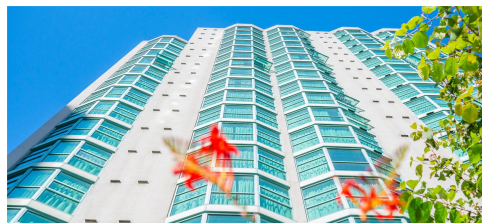
### IMPORTANT INFORMATION:

- **Important:** An additional \$30 per person each way applies outbound for travel on a Friday, Saturday or Sunday and inbound travel to New Zealand for travel on Thursday, Friday or Saturday

Ex WLG from **\$2,316**  
Ex CHC from **\$2,316**  
Valid for sales 7 Jan 25 to 17 Jan 25  
**unless otherwise specified**  
Valid for travel commenced  
18 May 24 & completed 5 Dec 25  
(unless otherwise specified)  
Blackouts: 7 Jan - 17 May 25, 12 Jun - 21 Jul  
25 & 18 Sep - 7 Oct 25

**AIR NEW ZEALAND**

## Discover Vancouver



### Rosedale on Robson

In the heart of the entertainment and sports district, the Rosedale on Robson Suite Hotel offers you comfort and relaxation, with water and mountain views, in a perfect central location. Choose from one and two bedroom suites with fully equipped galley kitchen.

One Bedroom Deluxe Suite (3 Nights)	Twin	Extra Night
18 May - 11 Jun 25 & 22 Jul - 17 Sep 25	\$2,676	\$292
8 Oct - 5 Dec 25	<b>\$2,316</b>	\$173

**INCLUDES:** 3 nights at Rosedale on Robson  
- Buffet breakfast daily

**BONUS:** - FREE upgrade to a One Bedroom Superior Suite (subject to availability at time of booking)  
- VIP welcome gift including a bottle of wine per room

## Explore Vancouver



### Pan Pacific Hotel Vancouver

Experience the best that Vancouver has to offer, surrounded by panoramic views of the Coastal Mountains, Coal Harbour and city skyline. The Pan Pacific luxury Vancouver hotel, is situated on the downtown waterfront with some of the city's top tourist attractions including Flyover Canada and Gastown, the Vancouver Convention Centre, Cruise Ship Terminal as well as popular shopping and entertainment districts just minutes away.

Deluxe Room (3 Nights)	Twin	Extra Night
18 May - 2 Jun 25, 5 Jun - 11 Jun 25, 22 Jul - 9 Aug 25, 14 Aug - 10 Sep 25, 13 Sep - 17 Sep 25 & 8 Oct - 15 Oct 25	\$3,257	\$450
16 Oct - 5 Dec 25	\$2,516	\$206

NOTE: ^Price based on Sunday-Thursday night stays, surcharge will apply for stays that include Friday or Saturday.

**INCLUDES:** 3 nights at Pan Pacific Hotel Vancouver^  
- Hop-on Hop-off 48 Hour Pass

**PACKAGE TERMS & CONDITIONS:** It is our policy to present the cost of our holidays inclusive of all airport and government charges. Please accept however that these charges are not within our control, therefore we reserve the right to pass on any increase. Travel agent professional service fees where charged, will be additional to the advertised prices. Closeout and blackout periods apply over school holidays and peak holiday periods & availability of seats & rooms is likely to be very limited over this time . Payment & ticketing deadline - no more than 7 days after reservation confirmation. Please note that any Airline generated ticketing time limit which is earlier will over-ride this. Valid for sales to 17 Jan 2025. Valid for travel commenced and completed within the period 18 May 2024 to 5 Dec 2025 (unless otherwise specified). Prices are ex Auckland, Wellington or Christchurch. Package prices are based on the direct service from Auckland or from Wellington and Christchurch via Auckland flying Air New Zealand, Economy Class airfares. Airpoints Dollars & Status Points accruable on Smart Saver fares. Not eligible for Airpoints Dollars companion tickets. Eligible for Airpoints Dollars standby upgrades (not eligible on NZ7000 series flights). Book "K" class Economy. FARE BASIS:KSLYVR26 Routing: WLG/CHC-(NZ)-AKL-(NZ)-YVR and v.v. If you require other gateways aside from AKL, WLG and CHC, please book NZ domestic add-on fares as per international booking class, \$150pp return via AKL. Taxes correct as at 05 November 2024 but is subject to change at time of booking. Reservation deadline - ticketing must be completed within 3 days of original reservation/PNR creation but no later than 22 Nov 24. Reservations made within 7 days of departure must be ticketed within 24 hours. Please note that any Airline generated ticketing time limit which is earlier will over-ride this. Airfares are non-refundable and non transferable. Additional \$30 per person each way surcharge applies to outbound travel on a Friday, Saturday or Sunday from New Zealand to Vancouver, and to inbound travel from Vancouver to New Zealand on a Thursday, Friday or Saturday in Economy and Premium Economy. Seats are limited and will not be available on all services. Direct services only. Stopovers are not permitted. A surcharge may apply for stays over event dates, please enquire for more info. All components are strictly subject to availability. Please note there is limited availability on the advertised room types and all pricing is subject to change until a reservation is confirmed. Inventory & availability can change on a daily basis. Prices shown are based on per person costs in New Zealand Dollars, for payment by cash, cheque or eftpos only. Credit card sales not permitted unless Travel Agent acts as a merchant. Capacity limitations apply and may not be available on all services. Travel requiring an overnight stay in New Zealand will be at passengers own expense. Events beyond our control such as currency fluctuations and changes to the price of aviation fuel may result in prices variations . Strict cancellation fees apply. Packages are based on consecutive nights. For split stays please contact your travel consultant. For full terms and conditions and cancellation fees please contact your local travel agent for more information. Trade enquiries via GO Holidays. ISSUE DATE: 07 Jan 25.



Your Travel Agent  
**BUCKET LIST TRAVEL**  
38 Walton Street  
Red Beach, Auckland 0932  
Phone: 09 426 1490  
Email: [info@bucketlisttravel.co.nz](mailto:info@bucketlisttravel.co.nz)