



ALIHKAI
VOYAGE

ON DESTINATION TO

KOMODO NATIONAL PARK

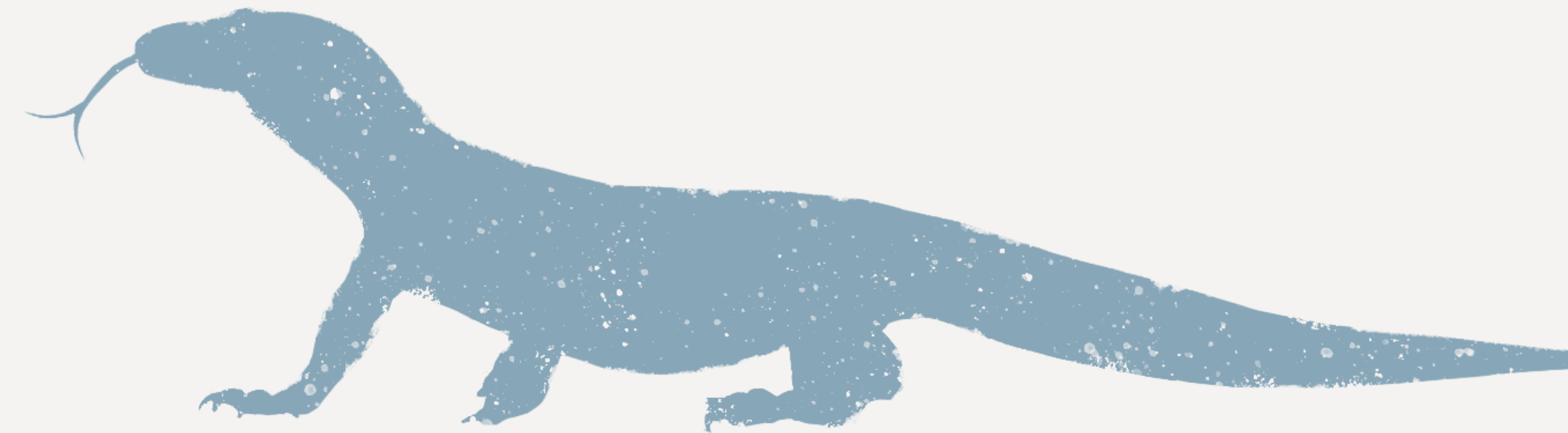
6 Days & 5 Nights

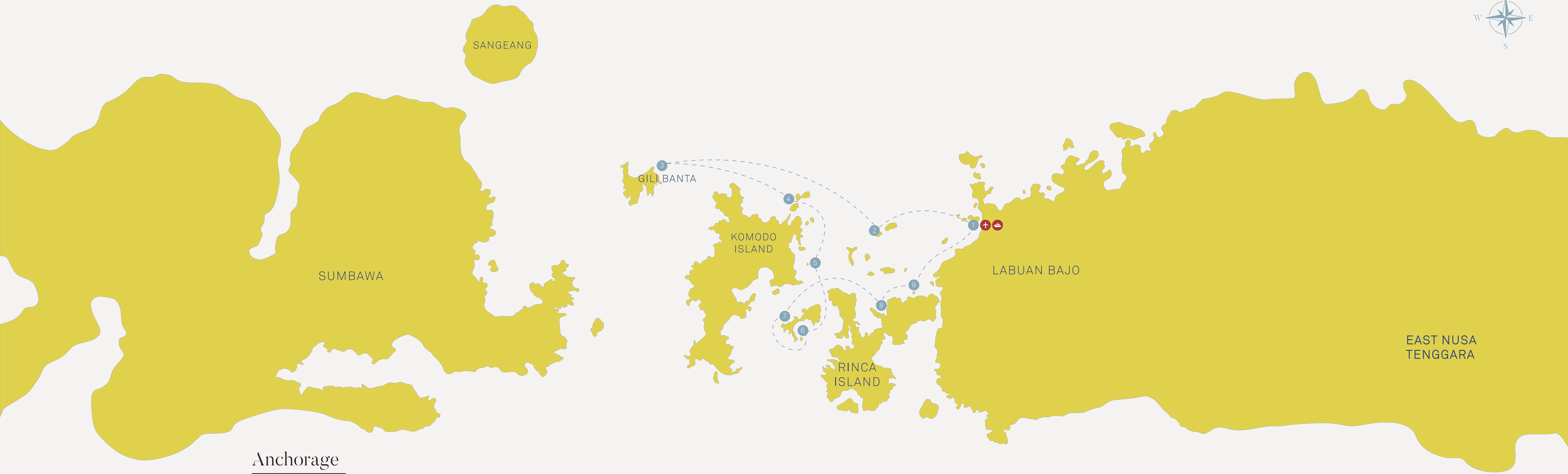
6 days | 5 nights

Deserted Islands, Dragons & Manta Rays

The Komodo National Park is a UNESCO World Heritage site that consists of 3 larger islands Komodo, Rinca, and Padar, and over 20 smaller ones, many of which are uninhabited. Komodo and Rinca are home to the legendary Komodo dragons, respected by locals who believe they descend from one born to a dragon princess centuries ago. The mystical hidden paradise of Komodo National Park and surrounding islands will enthrall travelers with its wild adventure. A remote land ruled by dragons where active volcanos rise from the ocean gives way to its unique treasures.

Initially founded in 1980 to protect its remarkable inhabitant, the Komodo dragon, the National Park has since been extended the protection to include additional terrestrial inhabits on the islands and the biodiverse marine life.





Anchorage

- 1 Labuan Bajo
 - 2 Sebayur besar | Sebayur Kecil
 - 3 Gili Banta
 - 4 Gili Lawa Darat
 - 5 Manta Point
 - 6 Padar
 - 7 Pink Beach Padar
 - 8 Rinca
 - 9 Kalong
- ✈ Airport 🚢 Port



Getting There

Aliikai Voyage moors at the closest harbor to the airport and transfers are provided by private vehicle directly to our waiting tenders. All airports are serviced by scheduled airlines, while selected airports can accommodate private jets.

Airports

Departure:
Denpasar Airport (DPS), Bali
Multiple International and domestic connection per day from North America, Europe & Asia
Check-in: From 8am

Arrival:
Labuan Bajo Airport (LBJ), Flores
Labuan Bajo - Bali (Direct)
Labuan Bajo - Jakarta (Direct)
Check-out: Until 11am

Day
01

Sebayur Besar | Sebayur Kecil

Welcome onboard Aliikai Voyage. We depart Labuan Bajo to Sebayur Besar and Sebayur Kecil. The remainder of the day is reserved for diving or snorkeling the sights surrounding the islands, beach time, and trekking - if the tide allows.

Return to the boat for a delicious al fresco dinner under the stars.

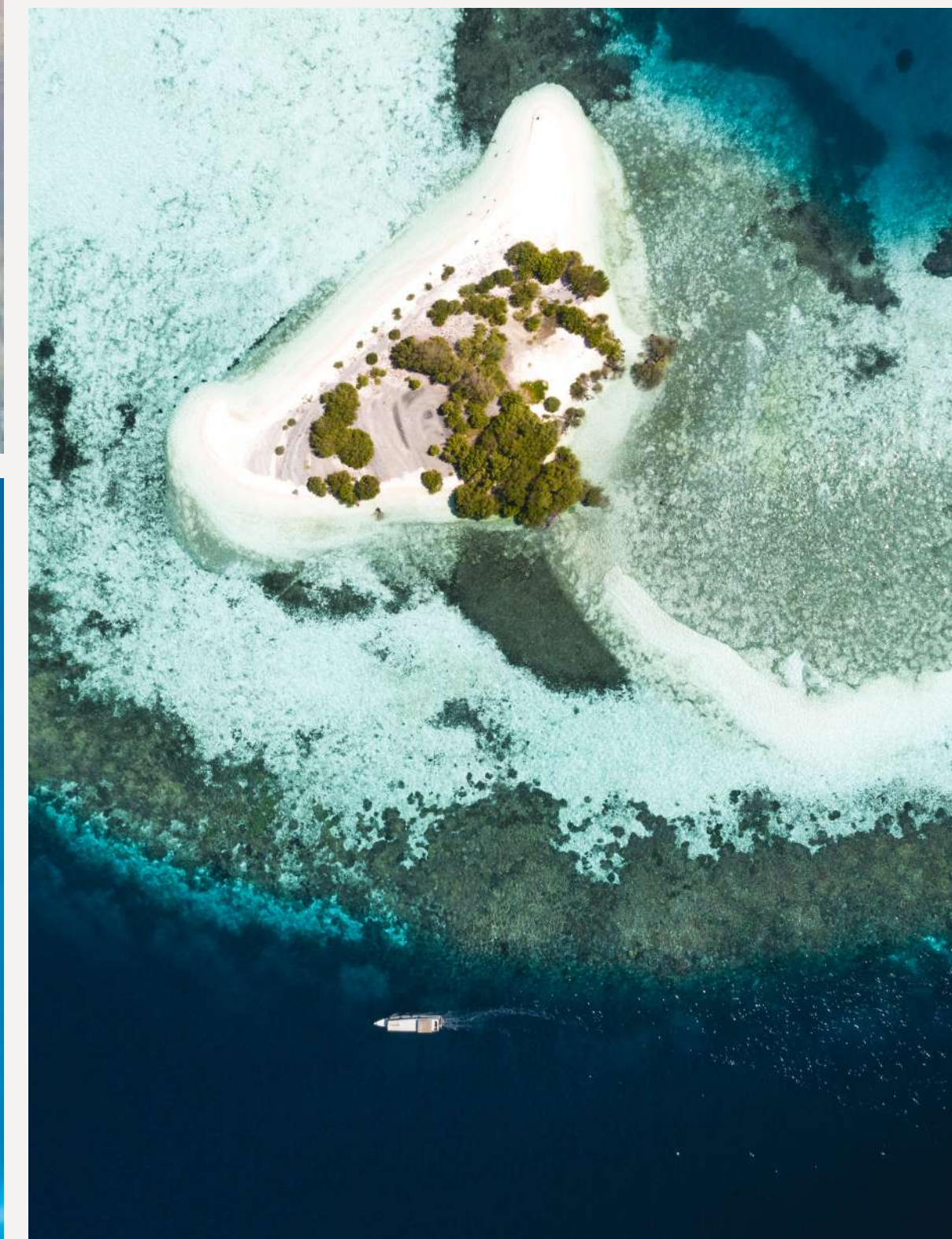


Day
02

Gili Banta

Wake up to Indonesia's beautiful seascapes. After a relaxing morning and delicious breakfast, we will start our full day of exploring Gili Banta. Our signature beach setup will be waiting for a day of barefoot adventures including diving some of the amazing sites surrounding the island.

This evening is a special treat to enjoy sundowners and a delicious beach BBQ.

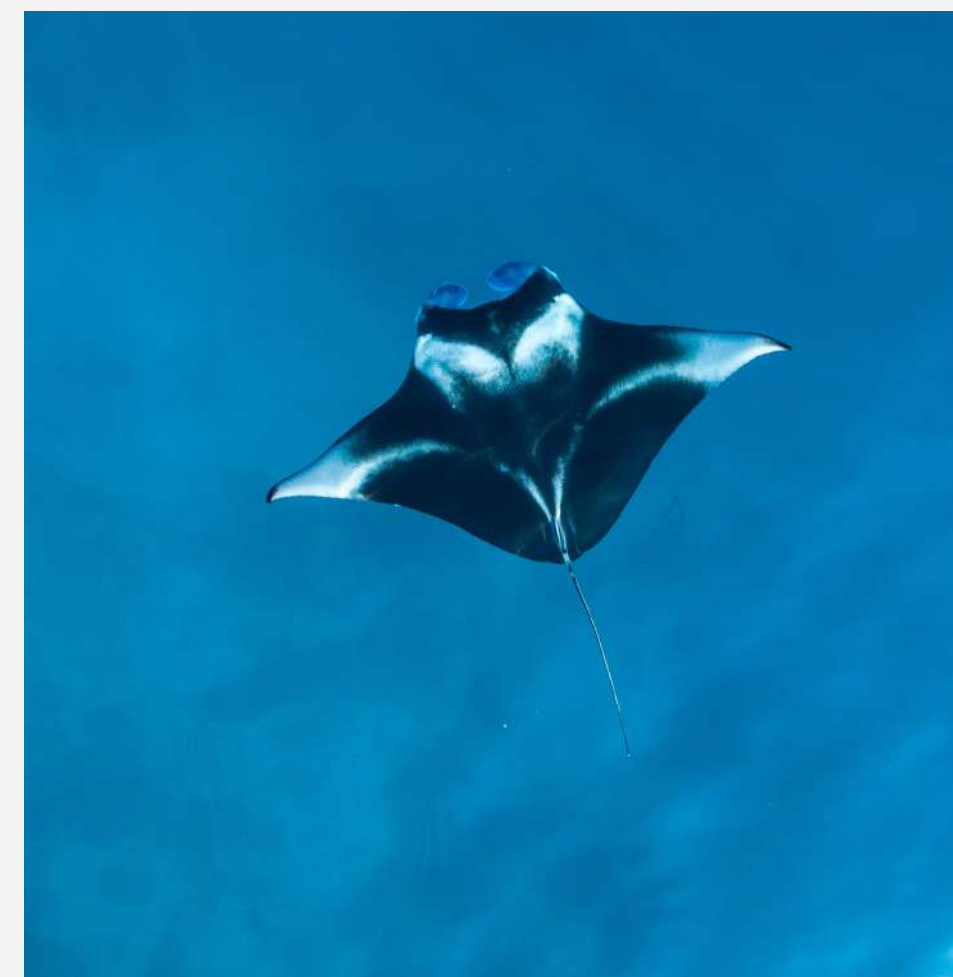


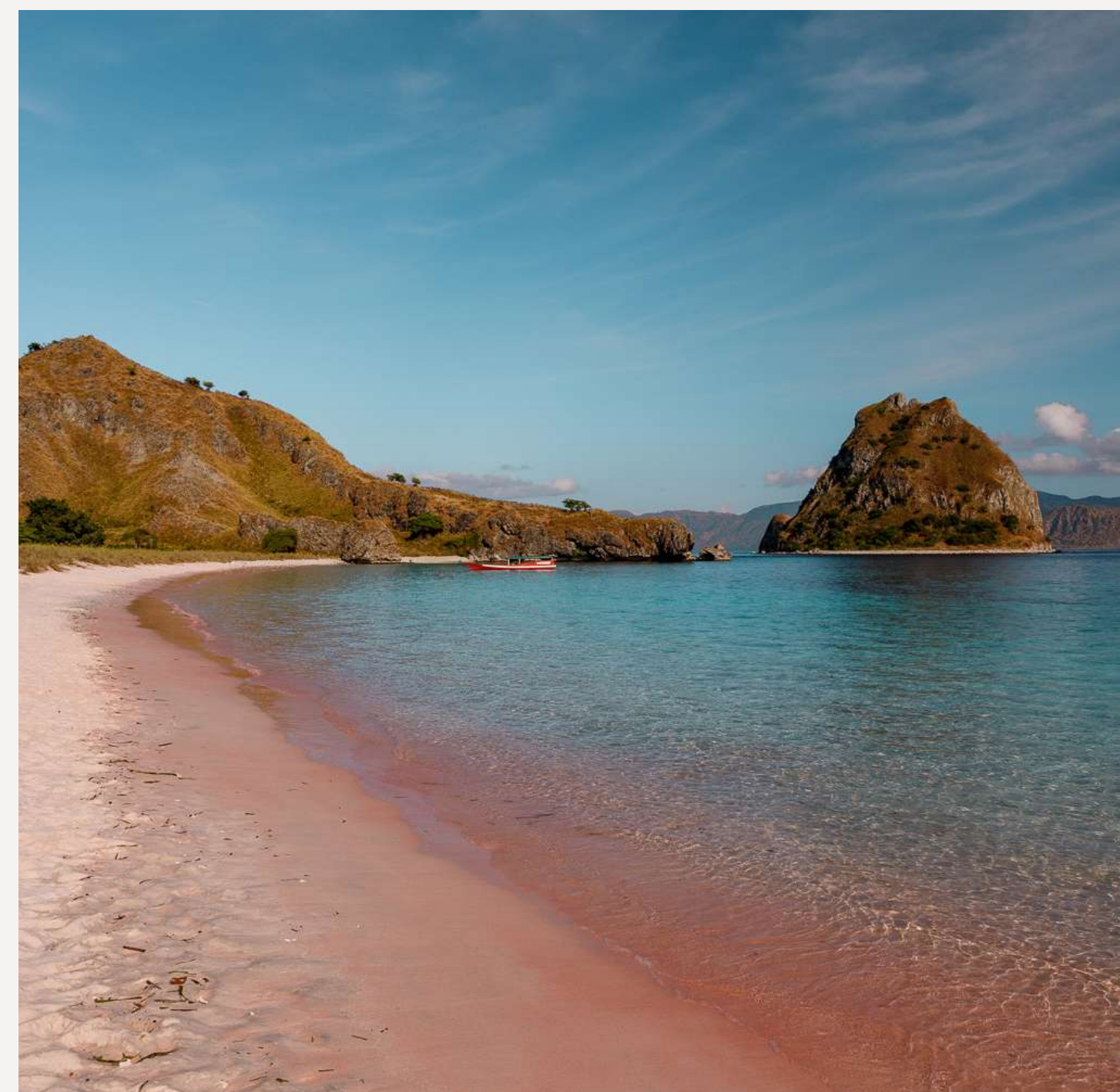
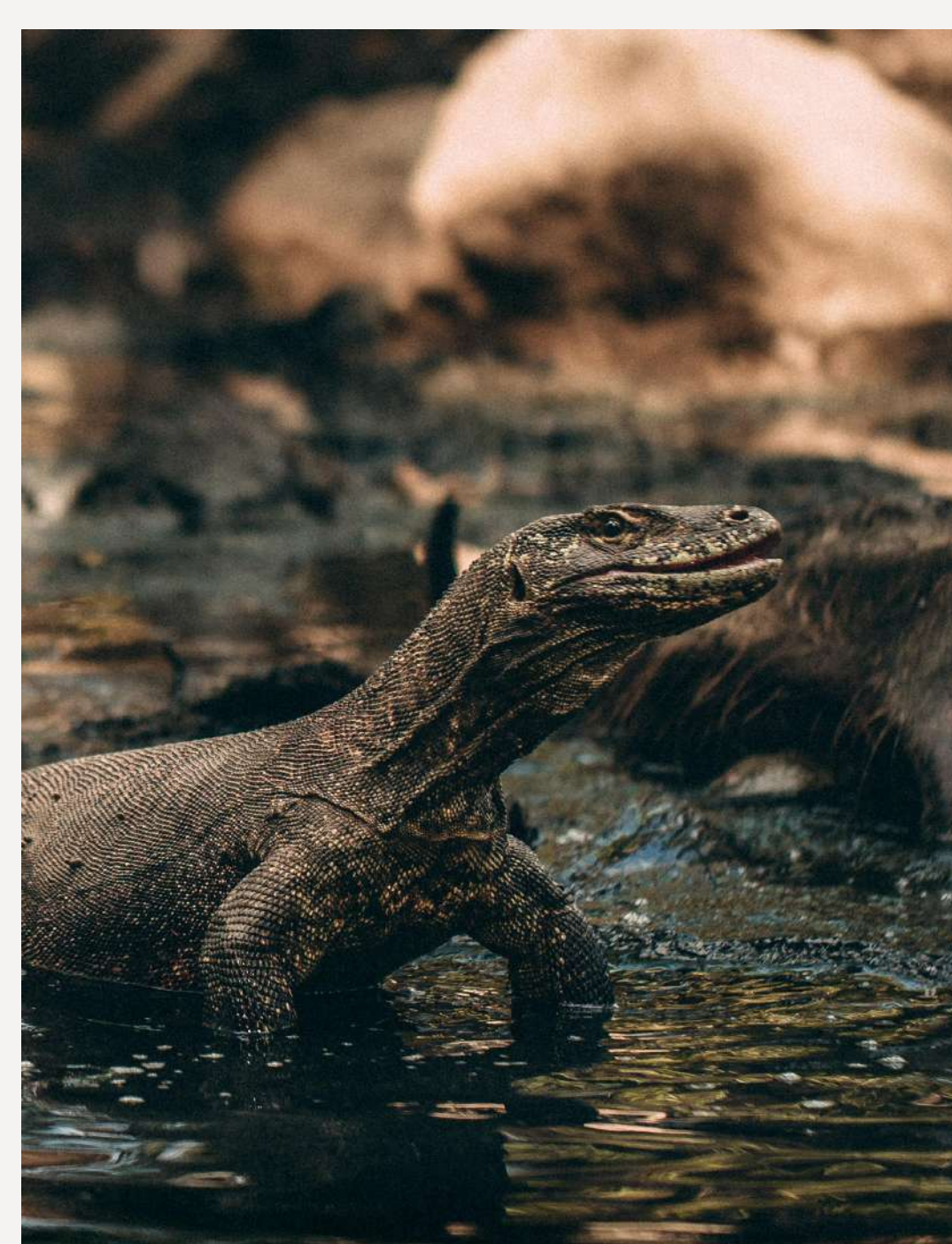
Day
03

Gili Lawa Darat | Gili Lawa Laut

Today is dedicated to the islands of Gili Lawa Darat and Gili Lawa Laut. After a hearty breakfast onboard, we'll head ashore to hike to the lookout for postcard-perfect views on the bay. The rest of the day is yours - relaxing beach time, kayak, SUP, snorkel, or dive at the fantastic sites surrounding the islands.

Lunch and dinner will be served onboard.





Day
04

Manta Point | Karang Makassar | Padar

After breakfast on board, we head out to Manta Point and Karang Makassar. Spend the morning snorkeling or diving with the majestic Manta Rays followed by Karang Makassar, a sandbar surrounded by beautiful turquoise water.

Lunch will be served on board as we sail to Padar Island.

This afternoon we stretch our legs as we trek to the top of Padar island for a scenic view of the surrounding islands. Afterward, we will have time to snorkel or dive.

Alfresco dinner will be served on board.

Day
05

Pink beach | Rinca | Kalong

After a relaxing breakfast on the deck, we will step ashore on Pink Beach where we will have time to enjoy relaxing beach time, kayak, SUP, snorkel, and diving.

We will return to the boat for a delicious lunch on board as we set sail to Rinca Island to view the Komodo Dragons. After a short briefing with a park ranger, we will see the dragons in their natural habitat. Afterward, we will return to the boat for dinner and sundowners near Kalong island.

Day
06

Labuan Bajo

After breakfast onboard, the crew will transfer you to the airport for your onward flight.

— This is a sample itinerary. The itinerary may be altered based on the weather and sea conditions.

A
ALIKAI
VOYAGE

